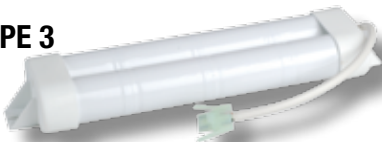


## Emergency Lighting Batteries

TYPE 1



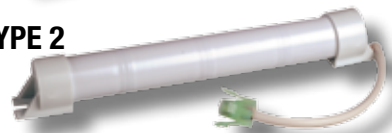
TYPE 3



TYPE 7



TYPE 2



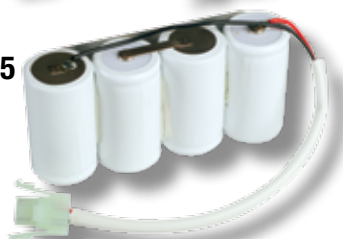
TYPE 4



TYPE 8



TYPE 5



| TYPE | DESCRIPTION  | VOLTAGE/CAPACITY | PART NO. |
|------|--|------------------|----------|
| 1    | 3 Cell Stick With Solder Tags  | 3.6v./4.0Ah      | 01723    |
| 1    | 2 Cell Stick With Solder Tags  | 2.4v./4.0Ah      | 01722    |
| 2    | 3 Cell Stick With End Caps, Leads & Connector <sup>A D</sup>             | 3.6v./4.0Ah      | EE170030 |
| 2    | 2 x 3 Cell Stick With Single End Caps, Link Wire & Leads <sup>C</sup>    | 7.2v./4.0Ah      | EE170132 |
| 3    | 2 x 2 Cell Stick With Double Ends Caps, Leads & Connector <sup>A D</sup> | 4.8v./4.0Ah      | EE170253 |
| 1    | 3 Cell Stick With Leads <sup>B</sup>                                     | 3.6v./4.0Ah      | EE170059 |
| 1    | 4 Cell Stick With Solder Tags  | 4.8v./4.5Ah      | 01724    |
| 2    | 4 Cell Stick With Single End Caps, Leads & Connector <sup>A D</sup>      | 4.8v./4.0Ah      | EE170038 |
| 3    | 2 x 3 Cell Stick With Double End Caps, Leads & Connector <sup>A D</sup>  | 7.2v./4.0Ah      | EE170262 |
| 1    | 2 Cell Stick With Fly Leads <sup>B</sup>                                 | 2.4v./4.0Ah      | EE170101 |
| 2    | 2 Cell Stick With Single End Caps, Leads & Connector <sup>A D</sup>      | 2.4v./4.0Ah      | EE170032 |
| 5    | 3 Cell Row with Backplate, Leads & Connector <sup>A D</sup>              | 3.6v./4.0Ah      | EE170041 |
| 4    | 2 x 2 Cell Stick With Double Ends Caps, Leads & Connector <sup>A D</sup> | 4.8v./4.0Ah      | EE170285 |
| 5    | 2 Cell Row With Backplate, Leads & Connector <sup>A D</sup>              | 2.4v./4.0Ah      | EE170204 |
| 1    | 5 Cell Stick With Solder Tags  | 6v./4.5Ah        | 01725    |
| 2    | 5 Cell Stick With Single End Caps, Leads & Connector <sup>A D</sup>      | 6v./4.0Ah        | EE170008 |
| 1    | 4 Cell Stick With Leads <sup>B</sup>                                     | 4.8v./4.0Ah      | EE170105 |
| 5    | 4 Cell Row with Backplate, Leads & Connector <sup>A D</sup>              | 4.8v./4.0Ah      | EE170048 |
| 7    | 3 Cell Stick With Solder Tags <sup>E</sup>                               | 3.6v./1.2Ah      | EE120037 |
| 2    | 6 Cell Stick With Single End Caps, Leads & Connector <sup>A D</sup>      | 7.2v./4.0Ah      | EE170053 |
| 8    | 10 Cell Block With Top, Bottom Cap & Solder Tags <sup>E</sup>            | 12v./1.2Ah       | EE120313 |

A 200mm Leads

C 350mm Leads

E C Cells

All Batteries Used are D Cells Unless Indicated

B 300mm Leads

D Standard Emergency Lighting Connector

**OTHER EMERGENCY LIGHTING BATTERY COMBINATIONS ARE AVAILABLE,  
PLEASE CALL OUR CUSTOMER SERVICE TEAM FOR FURTHER INFORMATION.**

**Euro Energy Resources Limited**  
10 Barrington Business Park  
Leycroft Road, Leicester LE4 1ET

**Tel: (0116) 234 0567**  
**Fax: (0116) 235 4183**

**info@euroenergy.co.uk**  
**www.euroenergy.co.uk**

